

Visirite

The Visirite concept was developed out of the need for a solution to replace the practice of tying banners placed between two star pickets which take but a gust of wind to turn from a company advertiser to a company deterrent. Visirite fits perfectly over star pickets and keeps those banners looking excellent! This initial concepts has grown into a much larger range of signage solutions so much so that it can now meet all of the sign writers needs, accept all substrates and is perfect for all sizes



The possibilities for Visirite are endless
Got a signage project? Use Visirite

Advantages

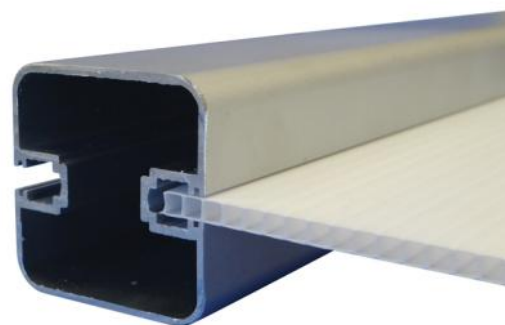
1. 1 system = 1000's of solutions
2. Easy handling & assembly
3. No high cost equipment
4. Low labour costs

Applications

- Real Estate
- Balustrade
- Café Barriers
- Information Boards
- Directional Boards
- Fencing
- Building Signage

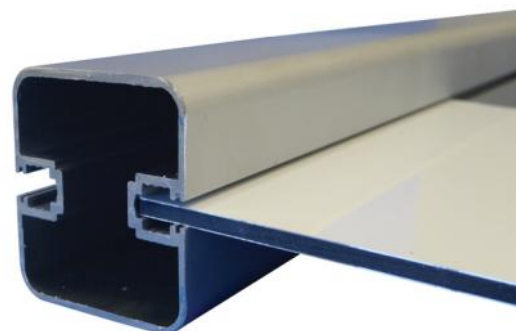
Hard / Rigid Substrates

- Flute Sheet
Holds up to 5mm



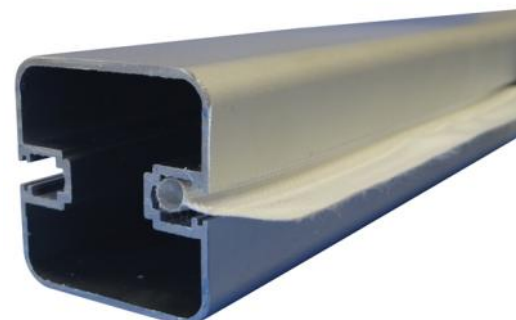
Hard / Rigid Substrates

- Aluminium Composite Panel
Holds up to 5mm



Banner Material

- Accepts rigid & silicone,
Kedar-edged banners



Visirite Aluminium Extrusion

- Available in Anodised, Mill & Black finish
- Heavy Duty
- Excellent for long term applications
- Fits all components
- Length - 5000mm
- Dimensions - 55mm x 55mm x 1.6mm
- Can be powder coated in different colours



90° Plastic Moulded Corner

- Easy assembly
- Fits all 3 extrusions
- Safe, no sharp edges

Cutting extrusion for this corner:

- Minus 40mm for insert size
- Minus 10mm for visual size



3 Way Plastic Moulded Junction

- Easy assembly
- Fits all 3 extrusions
- Safe, no sharp edges

Cutting extrusion for this corner:

- Minus 40mm for insert size
- Minus 10mm for visual size



90° Connector

- Fits all 3 extrusions
- Create mitre & T junctions



Wall Mount

- For wall-mounted frames
- Bracket width - 50mm



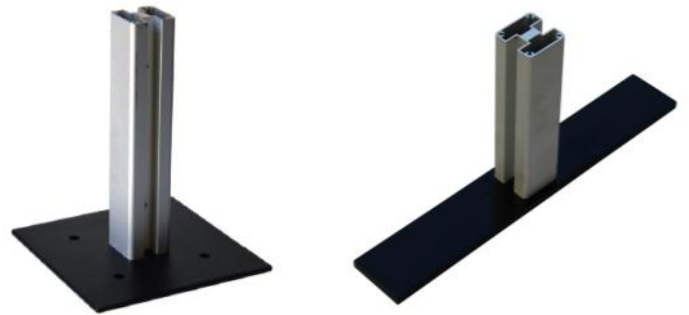
Mounting Profile

- Concrete into ground, extrusions sleeves over it
- Length - 3000mm



Hard Surface Mount & Flat Foot

- Mount horizontally onto walls for banners & other signs
- Mount vertically on concrete or create freestanding signs
- Hard surface plate dimension - 200 x 200mm
- Mounting profile - 250mmH



Plastic end Cap & Hanging Clips

- For hanging banners & vertical posts
- Hole diameter - 10mm



Quick Corner

- For mitre corners on wall signs
- Fits all 3 extrusions



Visirite Ideas



Visirite Ideas

